

BENEFITS

The Most Energy per Rooftop

Produces more energy in an area- or weight-constrained space than any other roof system available today

Easy to Install with All-In-One Design

Solar panel, frame, and mounting system are integrated into one unit. No grounding or roof penetration needed.

Roof-Preserving

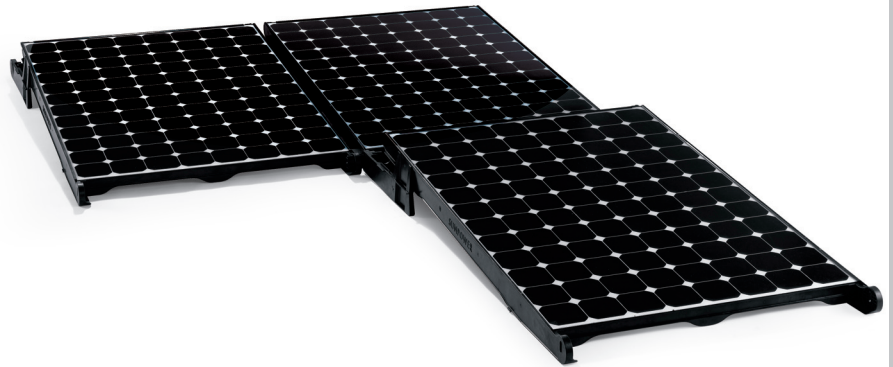
Compatible with all roof membranes. Smooth, lightweight design, combined with a non-penetrating installation, protects the roof and preserves roof warranties.

Long Lasting Durability

Aerodynamic design is resistant to high winds. Strong glass-filled polymer material offers long-term durability. Soiling is minimized with easy water runoff.



ships nested in 22-tile pallets



The SunPower™ T5 Solar Roof Tile is the most powerful solution for area- or weight-constrained flat rooftops. The T5 is the first photovoltaic roof product to combine solar panel, frame, and mounting system into a single pre-engineered unit. The nonpenetrating tiles position SunPower highest efficiency solar panels at a 5-degree tilt, for greatest energy production.

Tiles interlock for secure, rapid installation and maximum power output. Smooth-edged, durable and lightweight polymer material designed for a 30-year life protects the roof and eliminates the need for electrical grounding. The patented design resists high winds and corrosion and is flexible to adapt to virtually any flat or low-slope roof.

SunPower's High Efficiency Advantage - Up to Twice the Power

Comparable systems covering 10,750 ft ² (1,000 m ²)				
	Thin Film	Conventional	SunPower	
Peak Watts / Panel	65	215	305	315
PV Efficiency	9.0%	12.8%	18.7%	19.3%
W/ft ² (m ²) (PV only)	8 (90)	12 (128)	17 (187)	18 (193)
PV Roof Coverage	100%	50%	85%	85%
Total kW	90	60	159	165



Electrical Data

Measured at Standard Test Conditions (STC): Irradiance 1000W/m², AM 1.5, and cell temperature 25° C

Peak Power (+/-5%)	P _{max}	305 W	315 W
Rated Voltage	V _{mpp}	54.7 V	54.7 V
Rated Current	I _{mpp}	5.58 A	5.76 A
Open Circuit Voltage	V _{oc}	64.2 V	64.6 V
Short Circuit Current	I _{sc}	5.96 A	6.14 A
Maximum System Voltage	UL	600 V	
Temperature Coefficients	Power	-0.38% / K	
	Voltage (V _{oc})	-176.6 mV / K	
	Current (I _{sc})	3.5 mA / K	
NOCT		45° C +/-2° C	
Series Fuse Rating		15 A	
CEC PTC Rating		282.1 W	291.6 W

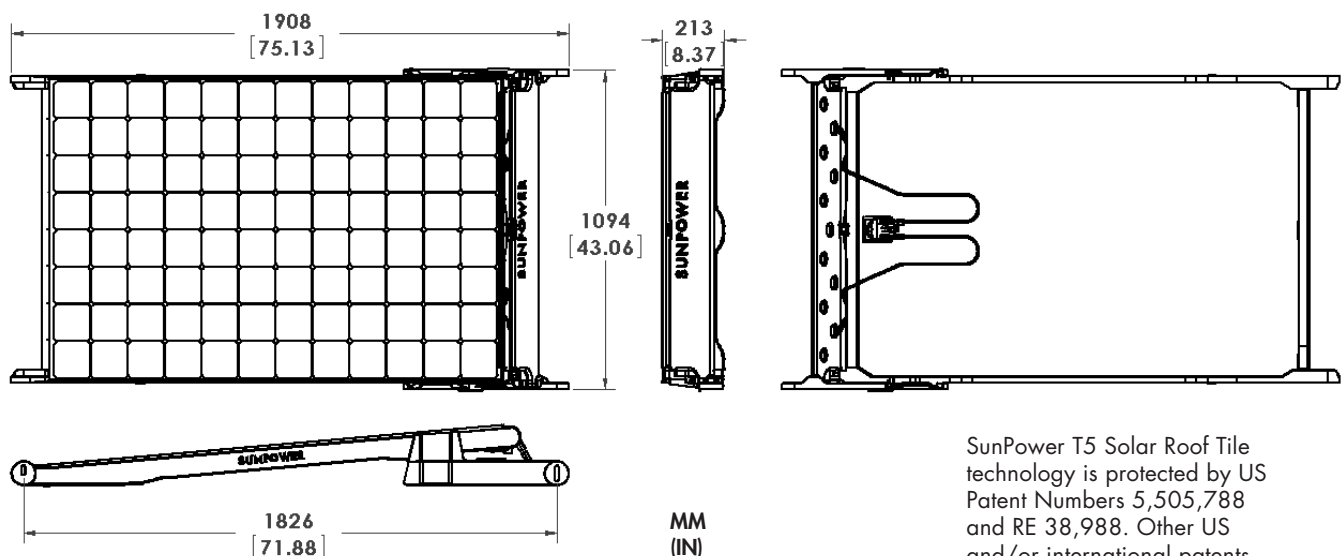
Mechanical Data

Solar Laminate	SunPower™ 305 Solar Panels, or SunPower 315 Solar Panels
Solar Cells	96 SunPower all-back contact monocrystalline
Front Glass	SunPower 305 Solar Panels: High transmission tempered glass
	SunPower 315 Solar Panels: High transmission tempered glass with anti-reflective (AR) coating
Junction Box	IP-65 rated with 3 bypass diodes, 32 x 155 x 128 (mm)
Output Cables	1000 mm length cables / MultiContact (MC4) connectors
Frame	Polymer material with fiber reinforcement, PPE+PS
Weight	47 lbs, 2.4 lb/ft ² (21.3 kg; 11.7 kg/m ²) base weight
Roof Coverage	85% N-S

Warranty and Conformity to Standards

Warranty	25-year limited power warranty
	10-year limited product warranty
Certifications	CSA listed (Tested to UL 1703), Class C Fire Rating

Dimensions



SunPower T5 Solar Roof Tile technology is protected by US Patent Numbers 5,505,788 and RE 38,988. Other US and/or international patents issued or pending may apply.

CAUTION: READ SAFETY AND INSTALLATION INSTRUCTIONS BEFORE USING THE PRODUCT.

Visit sunpowercorp.com for details